



SA STOCKBROKERS & SA DERIVATIVES ON LINE TRADING PLATFORM

Installation:

Please click on the link to download the Swordfish Online Trading Platform :

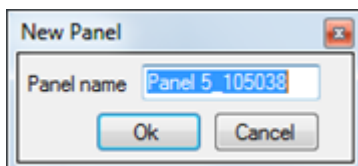
<http://www.estuarysolutions.com/live/downloads/ots/Estuary.Solutions.OTS.application>

Getting Started:

- [Opening Swordfish & Logging in.](#)

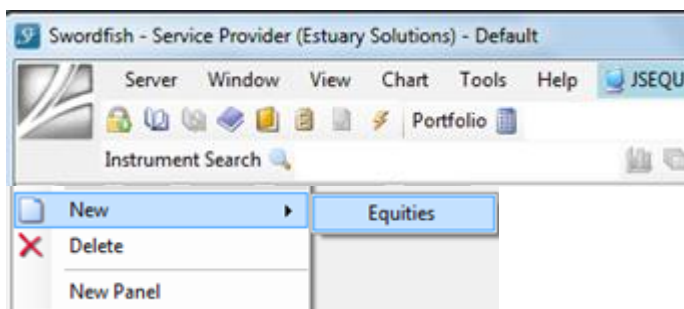
Setting Up:

- [Creating Panels](#)
Organisation of windows in Panels

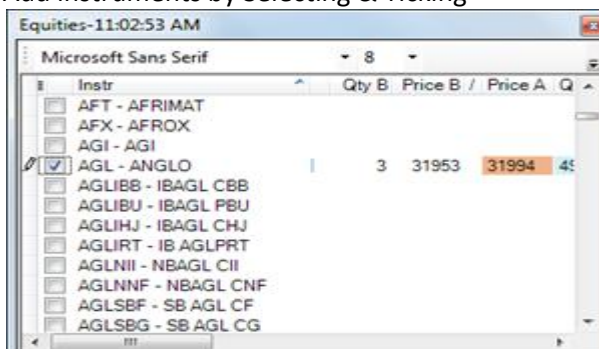


Name your Panel accordingly ie "Watch List"

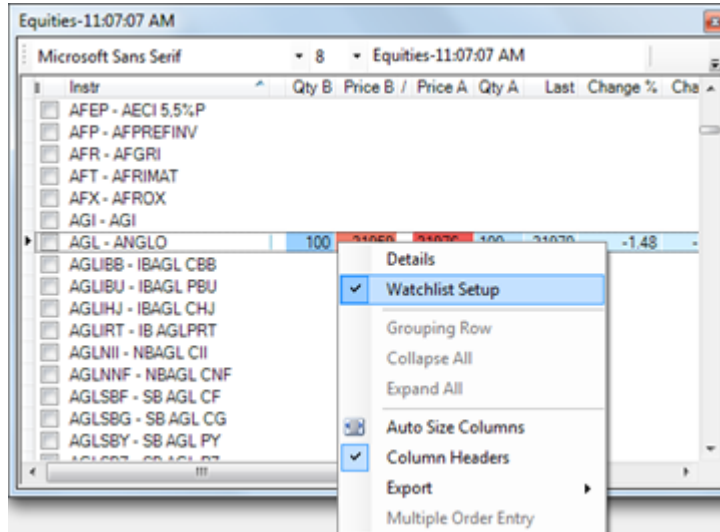
- [Watch Lists](#)
Creating a NEW List
Open your "Watch List" Panel



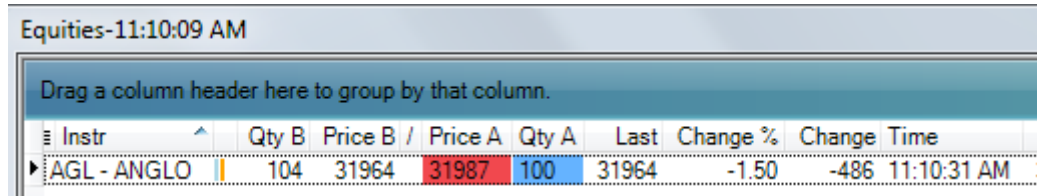
Add instruments by Selecting & Ticking



Complete selection & Right Click anywhere in box & then click on Watch List Setup

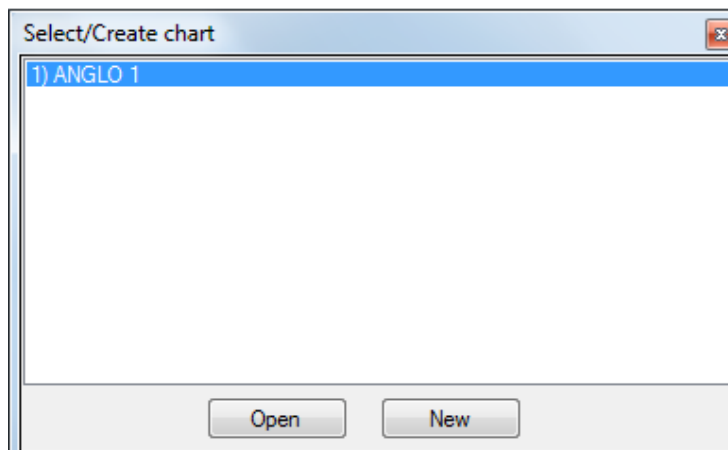
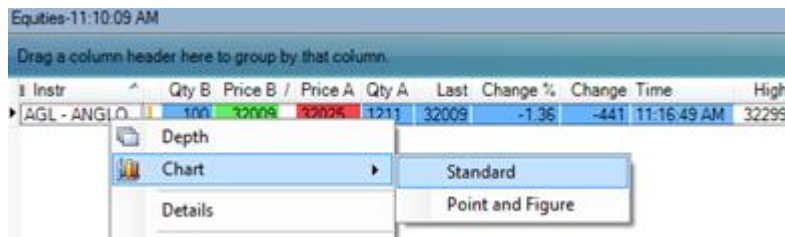


An Equities List will appear with your selected shares with full market depth.



This "list" will need to be "dragged & docked" in position (see page 3)

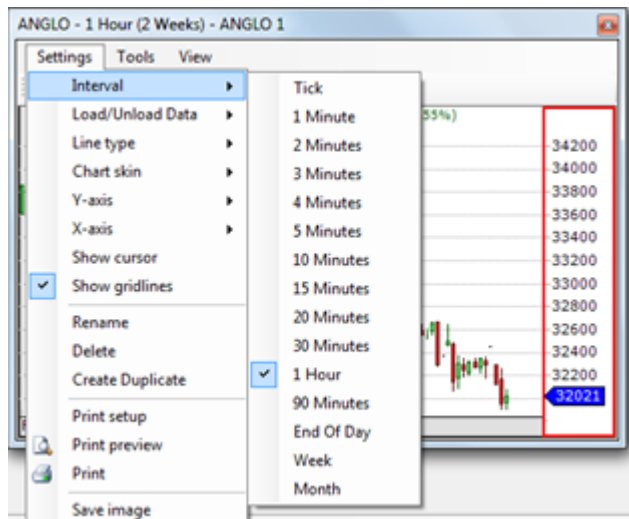
- [Adding charts](#)
Right Click on your Share & select chart > Standard



Click Open



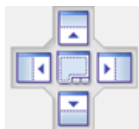
You can Select the “time frame” you want to see your chart to display in



Your chart also needs to be “dragged & docked” in position (see below)

- [Dragging & Docking Charts](#)
Customise how you want Panel displayed by dragging and docking windows.

Hold Mouse DOWN on Chart label (ie Anglo 1) & as you start DRAGGING arrows will appear, indicating positions you can DOCK at

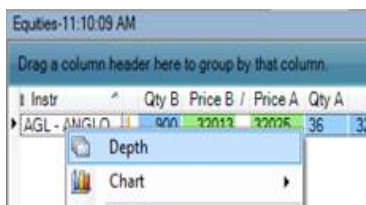


The blue shadow will indicate where the chart will go – so practice & play until you get the desired position.



- Market Depth

To see full market depth on a share – Right click on the share name and select Depth. The info screen will appear.

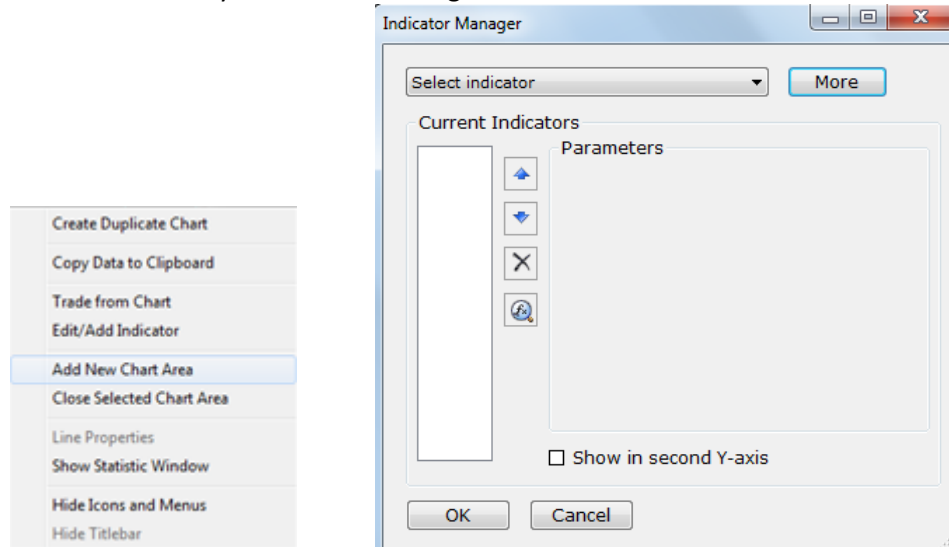


Mem B	Qty B	Price B	Price A	Qty A	Mem A
	100	31995	32025	640	
	40	31992	32025	2604	
	100	31988	32026	91	
	1200	31985	32029	1877	
	1000	31975	32029	1000	
	2440			6212	

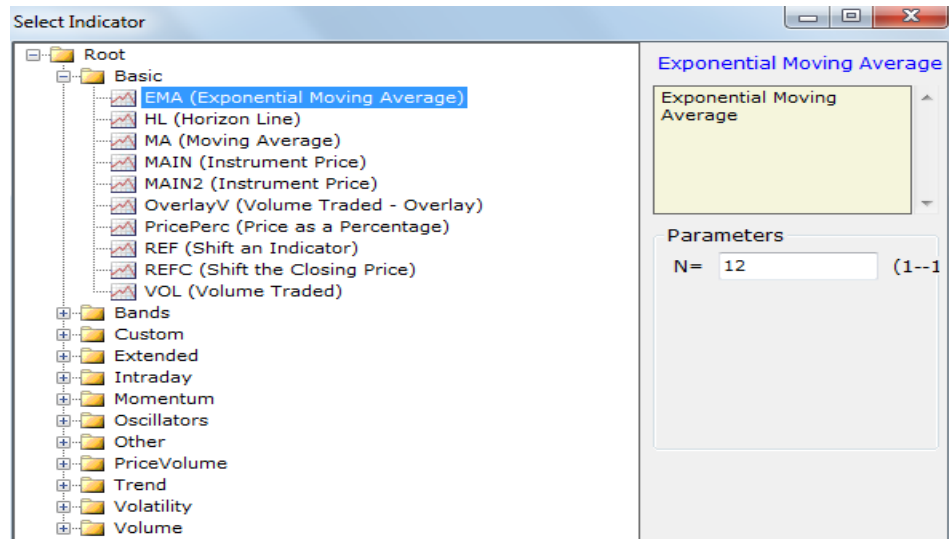
Chart Tools

- [Adding Chart Areas](#)

Create “area” for your indicators – Right Click on Chart & Add new chart area



Search for and Select the desired Indicator



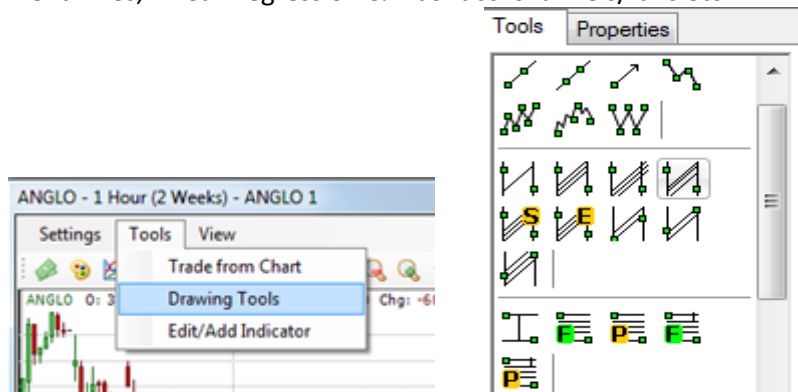
- [Chart Settings](#)

From Settings you can customise the Chart type and look of your display chart



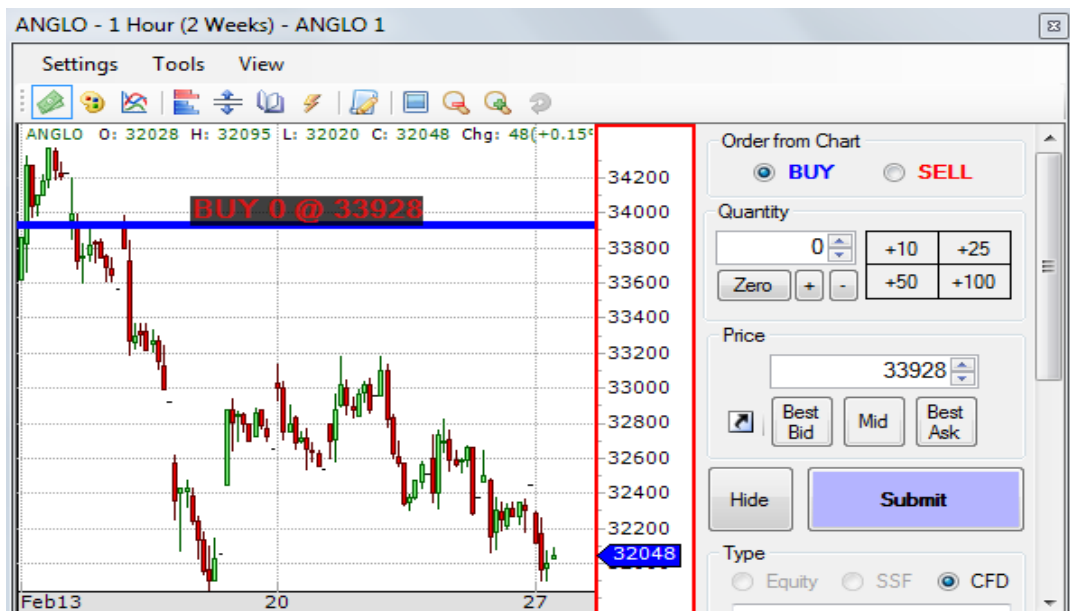
- **Drawing Tools**

Under Tools you will find a great variety of all the Analysis tools you need – ie Trend lines, Linear Regression & Fibonacci channels/fans etc.

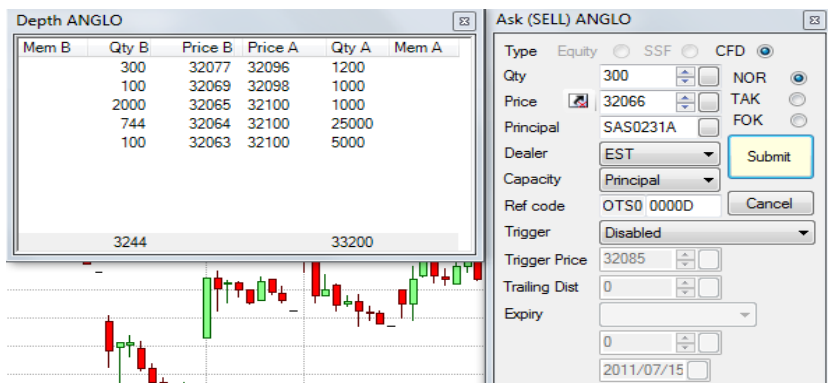


Trading

- Click on the *Trade from chart* icon  or Right click on the chart



- Or from Market Depth – click on Buy Price A or Sell Price B & enter trade.



Swordfish Help

There is an extensive Swordfish Help menu, and Video's that will provide detailed instruction to help you master the many features & functions the platform offers.



The screenshot shows the 'Estuary Solutions Swordfish Help' interface. On the left is a navigation menu with a 'Contents' section listing various topics, including '1. Video Episodes' and 'Swordfish in 10 easy steps'. The main content area on the right is titled 'Swordfish in 10 easy steps' and lists ten video episodes with brief descriptions. At the bottom of the main content area, there is a copyright notice for Estuary Solutions.

**Estuary Solutions
Swordfish Help**

Contents | Index | Search

- Swordfish and Component Features
- 1. Video Episodes
 - Swordfish in 10 easy steps**
 - Other episodes coming soon...
- 2. Getting Started
- 3. Working with Swordfish Windows
- 4. Trading with Swordfish
- 5. Using Charts
- 6. Using DDE
- 7. Tools in Swordfish
- 8. Using Excel
- 9. Swordfish Demo

©Estuary Solutions (www.estuarysolutions.com), All rights reserved.

Navigation: 1. Video Episodes >

Swordfish in 10 easy steps

Episodes:

- [Swordfish Installation](#) - How to download, install and view the free Swordfish component.
- [Log in to Swordfish sfLive](#) - How to log in, create price window, view instrument depth and open a chart.
- [Swordfish Windows Docking](#) - Learn how to use window docking, tabbed documents and panels to optimise your Swordfish workspace.
- [Charting Menus](#) and [Chart Icons](#) - The Swordfish chart menus and icons explained in detail.
- [Chart Zooming](#) - How to zoom and view full-screen charts.
- [Order Placement](#) - See how to place and manage orders.
- [Executing of Trades](#) - See the result when orders are matched.
- [Triggered Orders](#) - Triggered orders explained.
- [Chart Indicators](#) - Learn how to use indicators on Swordfish charts.
- [Chart Drawing Tools](#) - See how to use drawing tools on Charts.

©Estuary Solutions (www.estuarysolutions.com), All rights reserved.

Here are other links to Swordfish Help and information:

There is an extensive online help for Swordfish at:

<http://www.estuarysolutions.com/live/ots/help/html/index.html>

The direct link to the videos in the help file is:

<http://www.estuarysolutions.com/live/ots/help/html/index.html?sftenvideostepstopic.htm>